

BAUEDGE 23 605 000 خلاط البانيو المزود بمقبض فردي مقاس 1/2 بوصة

وصف المنتج:

• مثبت على الجدار

• قلب سيراميك GROHE Long-Life 35 مم

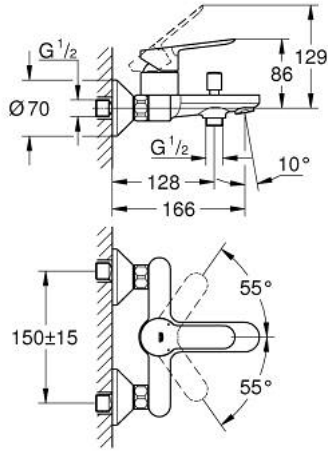
• طلاء كروم GROHE Long-Life

• محول آلي: حمام/دش

• مرغي المياه

• القارنات S

• شمسة جدارية معدنية



The diagram shows the assembly of a bicycle bell. The parts are numbered as follows:

- Part 1:** The main bell body, shown in an exploded view with a bracket indicating its connection to the handlebar.
- Part 2:** A small cylindrical component that fits into the top of the bell body.
- Part 3:** A small cylindrical component that fits into the bottom of the bell body.
- Part 4:** A small cylindrical component that fits into the side of the bell body.
- Part 5:** A small cylindrical component that fits into the side of the bell body.
- Part 6:** A small cylindrical component that fits into the side of the bell body.
- Part 7:** A small cylindrical component that fits into the side of the bell body.
- Part 8:** A small cylindrical component that fits into the side of the bell body.
- Part 9:** A small cylindrical component that fits into the side of the bell body.
- Part 10:** A small cylindrical component that fits into the side of the bell body.
- Part 11:** A small cylindrical component that fits into the side of the bell body.
- Part 12:** A small cylindrical component that fits into the side of the bell body.

Dimensions and specifications are provided for several parts:

- Part 9: ± 20
- Part 10: 32mm
- Part 11: 32mm
- Part 12: 30mm